

# BackFill Retainer™ (CPPP)

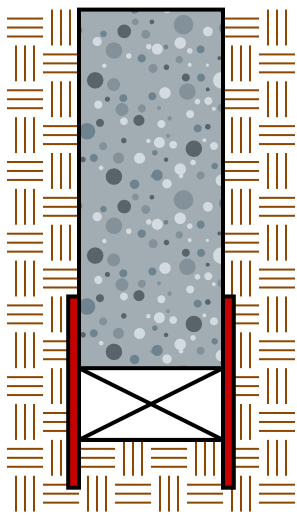
BackFill Retainer™ prevents backfill soil from displacing void space that has been formed under grade beams and slab edges. It is made of strong, rigid, white copolymer polypropylene plastic (CPPP), which is impervious to soil and water. Its thin, lightweight design allows for easy handling and storage savings. It is proven to outperform precast blocks, cement backer boards, fiberboard, or lumber. Designed to be positioned with the flutes in a vertical direction, it is typically installed using one of the placement options below. The interior panel is optional in crawl space applications:

## Preferred Placement

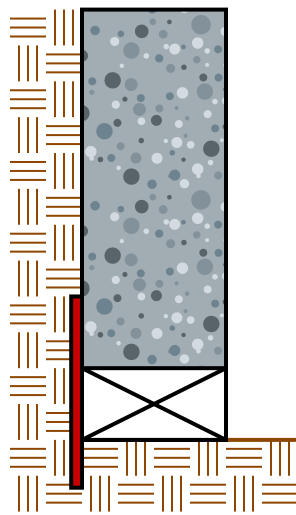
(extends above and below void space)

## Optional Placement

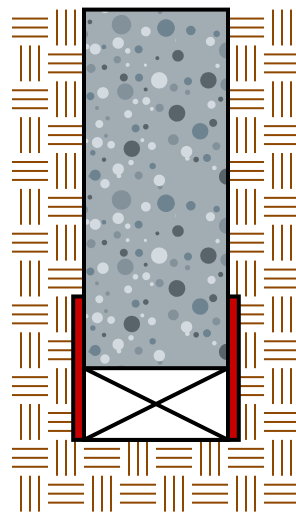
(staked using dowels or stacking pins)



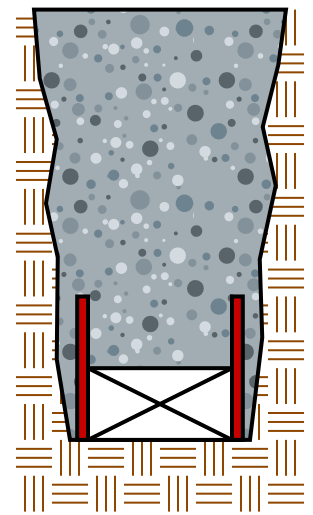
**Formed**  
(Both Sides)



**Formed**  
(Crawl Space)



**Formed**  
(At Grade)



**Trenched**  
(Embedded)

## Product Description:

- Made of copolymer polypropylene (CPPP)
- White in color for ultra-violet resistance
- Made with a cellular interior for rigidity
- Positioned with flutes in a vertical direction
- An economical alternative to other methods

## Benefits:

- Lightweight and easily handled
- Installation is trouble-free
- Will not warp in the sun
- Impervious to moisture
- Outperforms conventional products

## Size Recommendations:

Thickness	Height	Length	Void Space
3/8" (10 mm)	12"	96"	up to 04"
3/8" (10 mm)	16"	96"	up to 06"
3/8" (10 mm)	18"	96"	up to 08"
1/2" (13 mm)	20"	96"	up to 10"
1/2" (13 mm)	24"	96"	up to 12"
1/2" (13 mm)	30"	96"	up to 16"
1/2" (13 mm)	36"	96"	up to 18"
3/4" (19 mm)	32"	48"	up to 20"
3/4" (19 mm)	48"	48"	up to 28"

## NOTES

Sizes based on soil depths up to 6 feet.

Additional sizes and test data available upon request.

