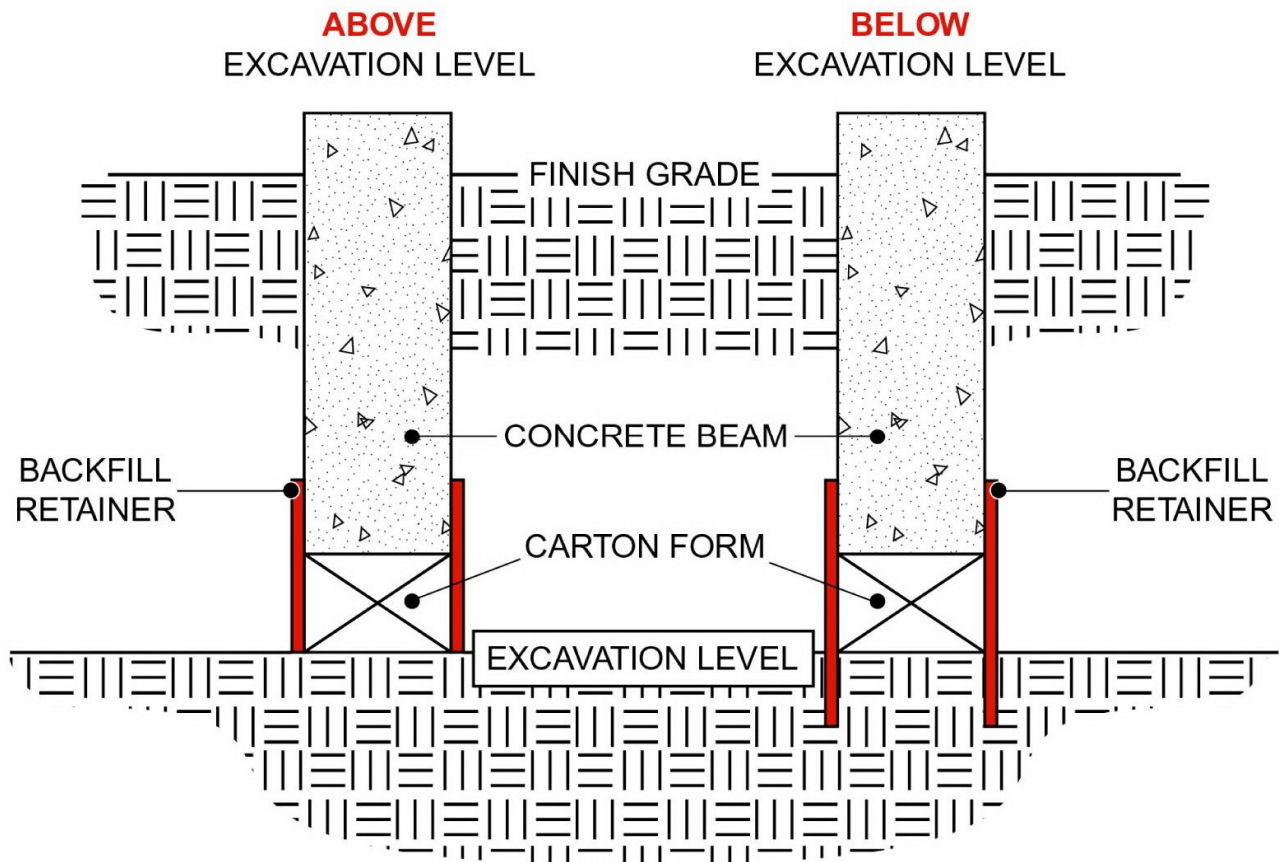


BackFill Retainer™ Placement Options

BackFill Retainer™ prevents backfill soil from displacing void form under grade beams and slab edges. It is made of strong, rigid plastic, and is impervious to soil and water. Its thin, lightweight design allows for easy handling and storage savings. It is proven to outperform precast blocks, fiberboard, or lumber.

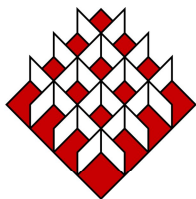


This product is:

- Made of high-density polypropylene
- White in color for ultra-violet resistance
- Made with cellular interior for rigidity
- An economical alternative

Available sizes:

<u>3/8" (10mm)</u>	<u>1/2" (13mm)</u>
12" x 96"	12" x 48"
16" x 96"	16" x 48"
24" x 96"	24" x 48"



SureVoid
Products, Inc.

Benefits:

- Lightweight
- Easy to install
- Will not warp in the sun
- Impervious to moisture
- Outperforms conventional products